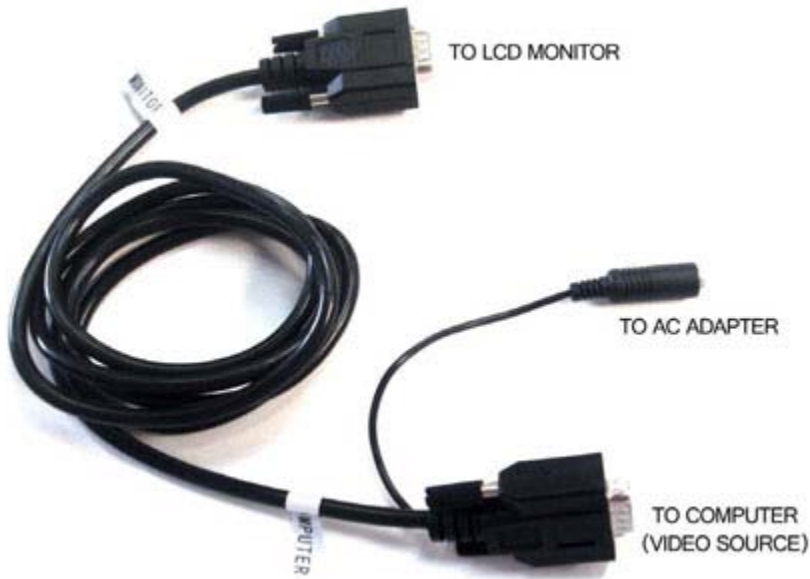


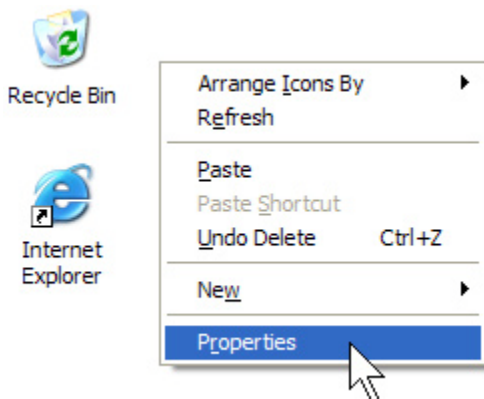
## General Setup Guide for Connecting your Laptop to your VGA LCD Monitor (PC)

Windows XP, Windows Vista, Windows 7 Settings may vary.

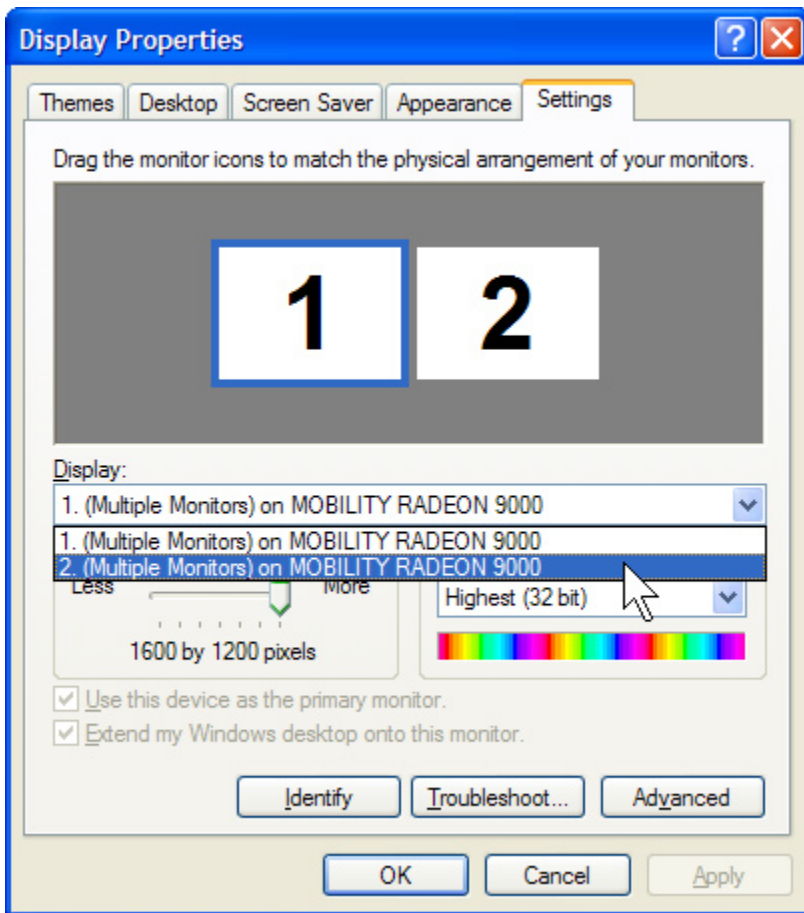
1. Connect your PC/Laptop to the 10" LCD monitor with the black VGA Cable.  
(Make sure correct end is connected to the PC - The cable has small silver tabs One end is labeled 'Computer' and other is labeled 'Monitor'.)



2. Connect AC Adapter or Battery to the power connector on the VGA Cable and power on you LCD Monitor
3. On the front of the monitor panel or from the remote, select VGA as your video input source.
4. Enable Dualview - **To turn on Dualview**, Right-click the desktop, and then click **Properties**.



5. In the **Display Properties** dialog box, click the **Settings** tab.

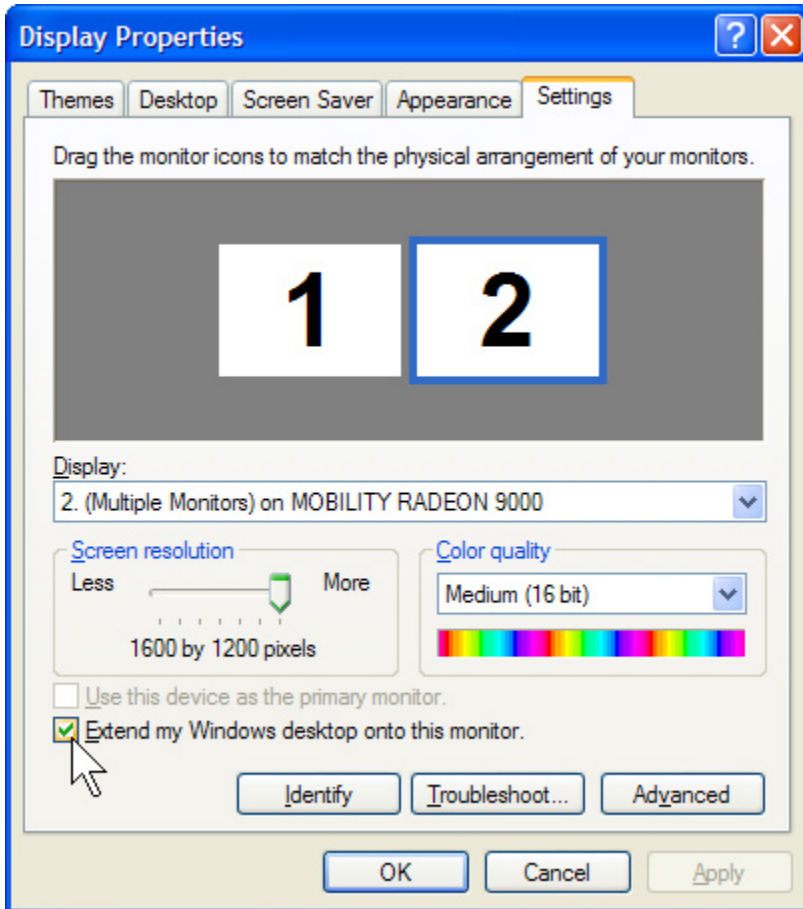


6. There should be two icons (One for each monitor) each with a number 1 & 2 on them. Click on the one with a 2 on it.

Click the **Display** list and select your external monitor. If you do not see multiple monitors listed, your computer hardware may not support Dualview. Contact your computer manufacturer for more information.

7. Below the icons should be two options: -Use this device as the primary monitor AND -Extend my desktop onto this monitor

Select the **Extend my Windows desktop onto this monitor** check box.



6. Click OK

Optional Steps...

### **Display Resolution**

Drag the screen slider to 800x600 and hit the 'Apply button'.

You can also try higher settings such as 1024x768 (if your laptop will let you.) Typically, the laptops video driver or external monitor MAY limit this setting.

### **Laptop External Display Function**

Look at your keyboard. Typically, one of the function buttons will have the words CRT/LCD or perhaps a small picture of a monitor on it. Note this key for future use!

On a Dell, it is typically F8. it may be on F5 or F7 as well. Your computers keys will vary, but it should be there.

While holding the FUNCTION KEY (FN), Press the proper function (f5-F7 Key) button ONCE and wait. After a few seconds, the second display should

come on. Be patient, this can take up to 5 seconds. On the monitor, it may take up to 10 seconds for the LCD to detect your system and switch.

Note: a second press of this function will (usually) switch to EXTERNAL monitor only. A third press will go INTERNAL only, and around the circle for each press after that. Also note that some laptops may do this sequence in a different order, so learn your system so you can quickly switch to the mode you want.

### **Screen Refresh Rate**

Click on the ADVANCED button on the display properties window. If "apply the new display settings without restarting" is not selected, select it. Under Screen Refresh Rate, select 60 Hz. Click APPLY and CONFIRM the choice. Click OK to close the ADVANCED dialog window. Close the Display Properties Dialog. You should now see an image on the second monitor.

Note that when using the LCD Monitor, after pressing the Function key for the monitor change, it may take up to 10 seconds for the monitor to find and lock on to your machine. Just wait for it. Pressing the FUNCTION key again may simply mess up your settings or switch the monitor off. Not all laptops work the same way, and there are some differences in Windows OS releases on the order of the switching functions. You should learn how yours works BEFORE you get to your shoot.

Here is a guide from Microsoft that may help as well:

<http://www.microsoft.com/windowsxp/using/setup/hwandprograms/monitors.mspx>